



iECHO - A digital platform to support the global Project ECHO movement

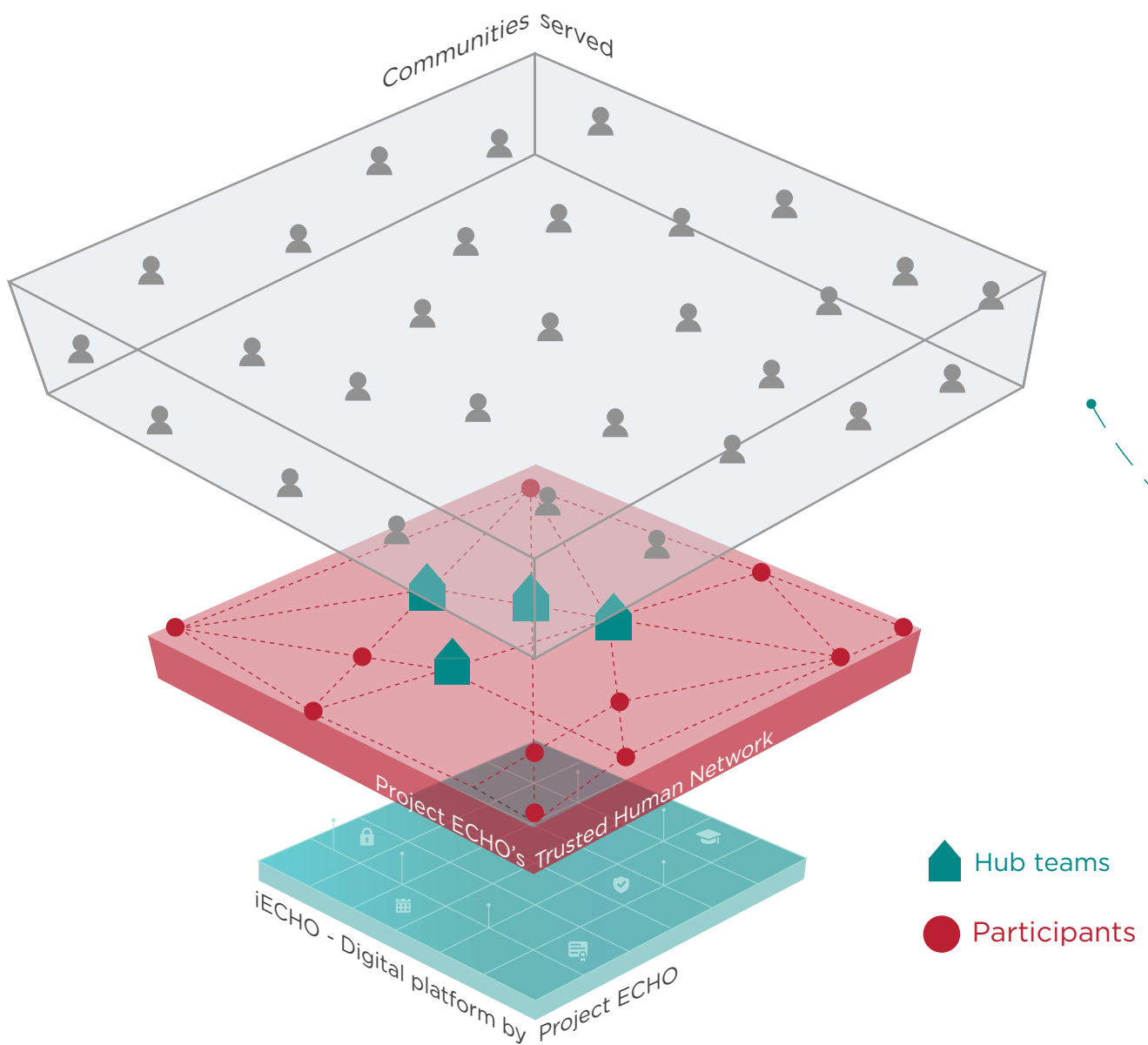
One place online for the entire community

Executive Summary

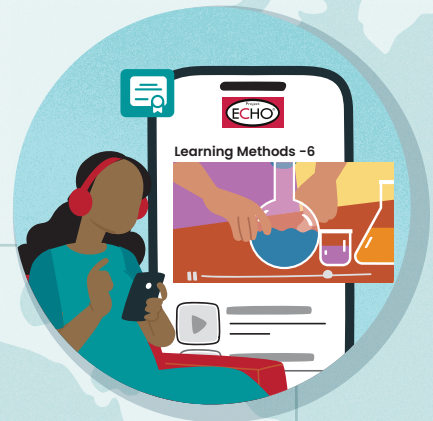
Project ECHO is a revolutionary solution that connects experts with frontline workers through virtual learning communities —fostering mentorship and guided practice.

The iECHO digital platform enables this global community to meet their goals with speed, at massive scale, and at very low cost.

iECHO breaks down barriers of language, technology, and geography —ensuring that the right knowledge is available at the right place at the right time.



EDUCATION



AGRICULTURE

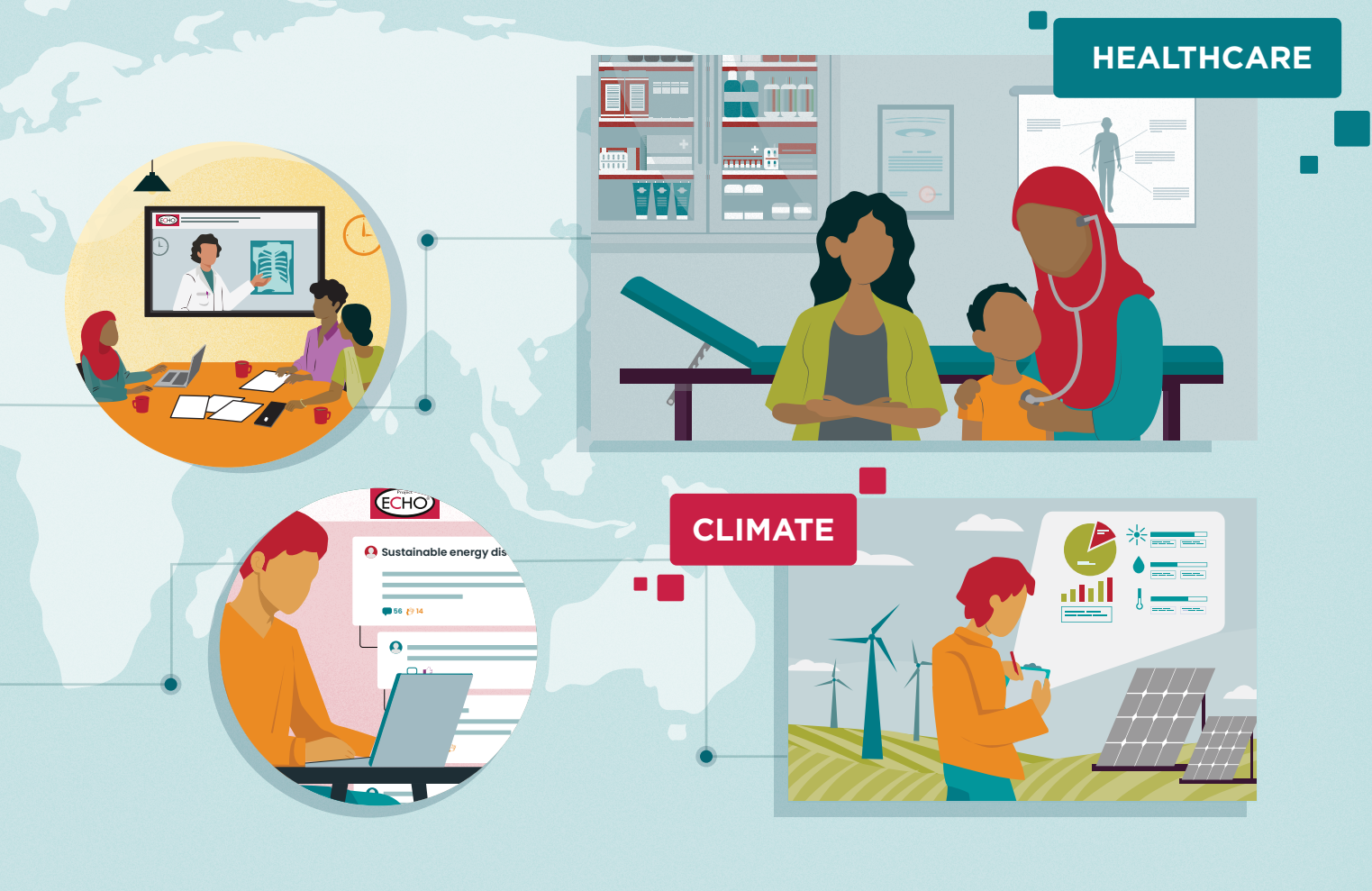


What is iECHO

iECHO is the digital backbone of Project ECHO. It enables ECHO partners to design, manage, evaluate, and scale their programs.

Designed as a **Digital Public Good**, iECHO removes barriers to collaboration and helps build **Trusted Human Networks** — communities of experts, practitioners, and learners working together to solve complex challenges to reduce inequities around the world.

Available at no cost to ECHO partners, iECHO supports them to drive impact with greater speed, scale, and quality.



• Mission and Vision

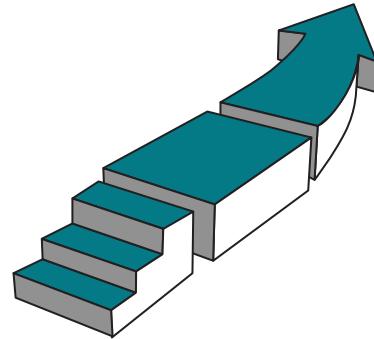
iECHO helps advance Project ECHO's mission: to democratize knowledge, strengthen systems, and ensure that the right knowledge reaches the right people at the right time — everywhere.

The platform fosters global collaboration by leveraging technology to break down barriers, making knowledge and resources available to practitioners and frontline workers across the globe.

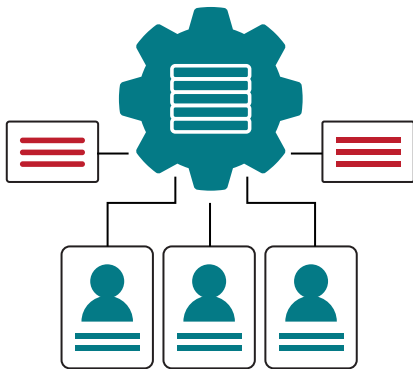
Objectives



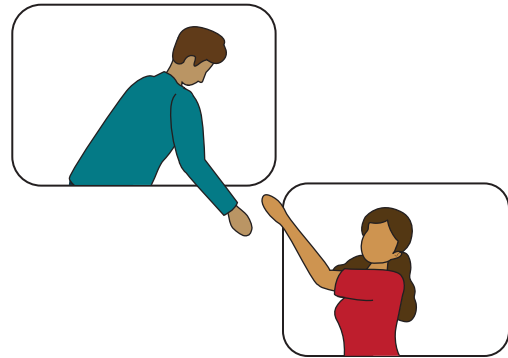
Eliminating barriers to participation in the ECHO movement



Accelerating adoption and launch of new ECHOs



Amplifying impact of operations and increasing productivity



Empowering and building community throughout the ECHO movement



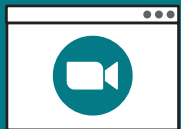
The iECHO platform was incredibly facilitative and helpful during the Primary Mental Healthcare Course. It simplified our learning experience with timely session reminders, attendance tracking, and easy access to session materials.

RAMINDER KAUR

Participant,
Hospital for Mental Health, Gujarat



Key features



Videoconferencing built in

Integrated with Zoom, enabling easy participation.



Calendar and Reminders

Schedule sessions with integrated calendar and automated reminders.



Attendance and Reporting

Automated attendance tracking with advanced reporting.



Search and Discovery

Find relevant hubs and programs by focus area, country, or language.



User Roles and Permissions

Fine tuned access control and governance for hubs and programs.



Integrated Form Builder

Customizable feedback forms and assessments with data integration.



Connections and Networking

Integrated discussions forum facilitates community engagement.



Streamlined Content Storage

Upload, manage, and share learning resources in one place.



Partner feedback



"iECHO enhances peer learning for frontline WASH workers and gives **visibility** and **recognition** to their work in remote areas."

Bishwadeep Ghose
Water For People, India



"iECHO is **user-friendly** and perfect for remote areas, with reminders that keep participants engaged and **accessible via smartphones**."

Betty Lelei
AMPATH, Kenya



"iECHO has **improved online training**, efficient knowledge sharing, and **strengthened connections** among healthcare staff across regions."

Pham Minh Hanh
National Children's Hospital, Vietnam

Accolades



Top 28 innovations for
Impact towards SDGs



Award for
**Catalyzing Interactions
at Scale**



Top 50 in
Design for Social Impact



Recognized for use of
**Cloud Technology
for Social Impact**



Award for using
**Technology to Create Impact
in Healthcare**

Security & Privacy

iECHO is built with open source technologies and interoperable data standards. It offers robust data security, mobile-first accessibility, and adhere to global data privacy standards.



Accessibility

As a global and inclusive platform, iECHO is available in 25+ languages through web, and mobile applications.

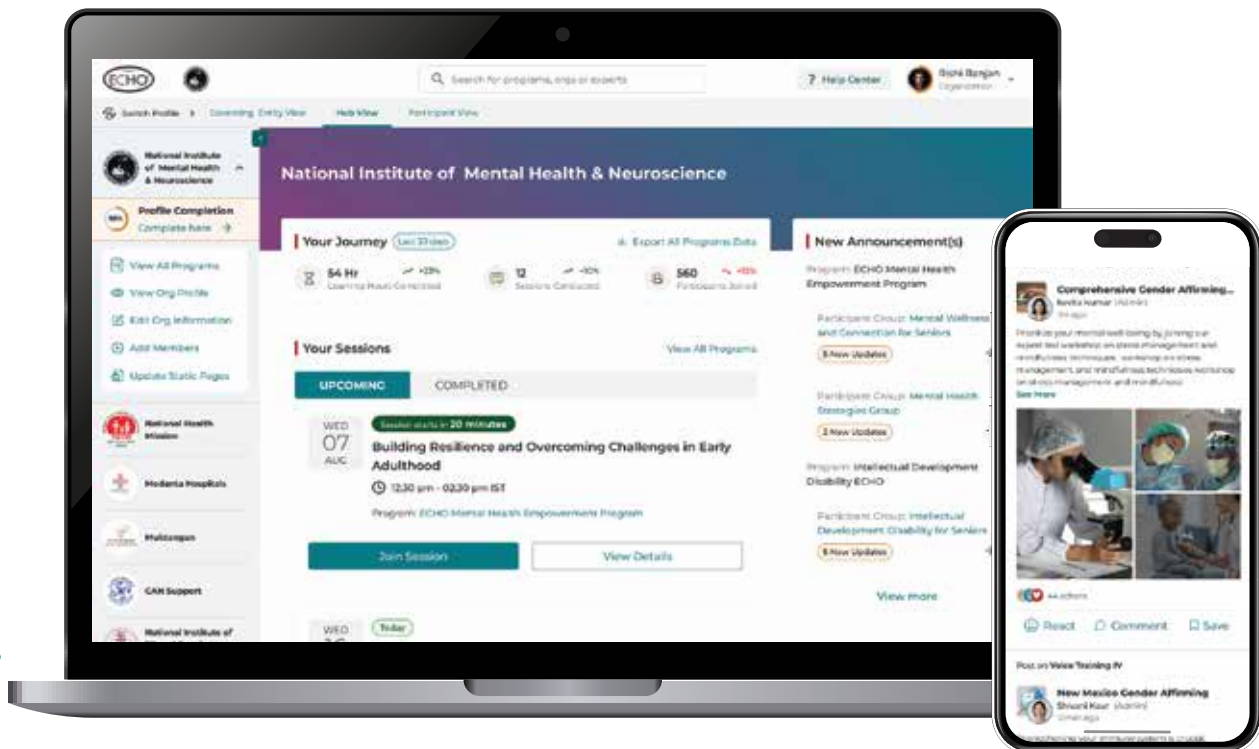
English
हिंदी
മലയാളം

ಕನ್ನಡ
मराठी
गुजराती

ਪੰਜਾਬੀ
தமிழ்
తెలుగు

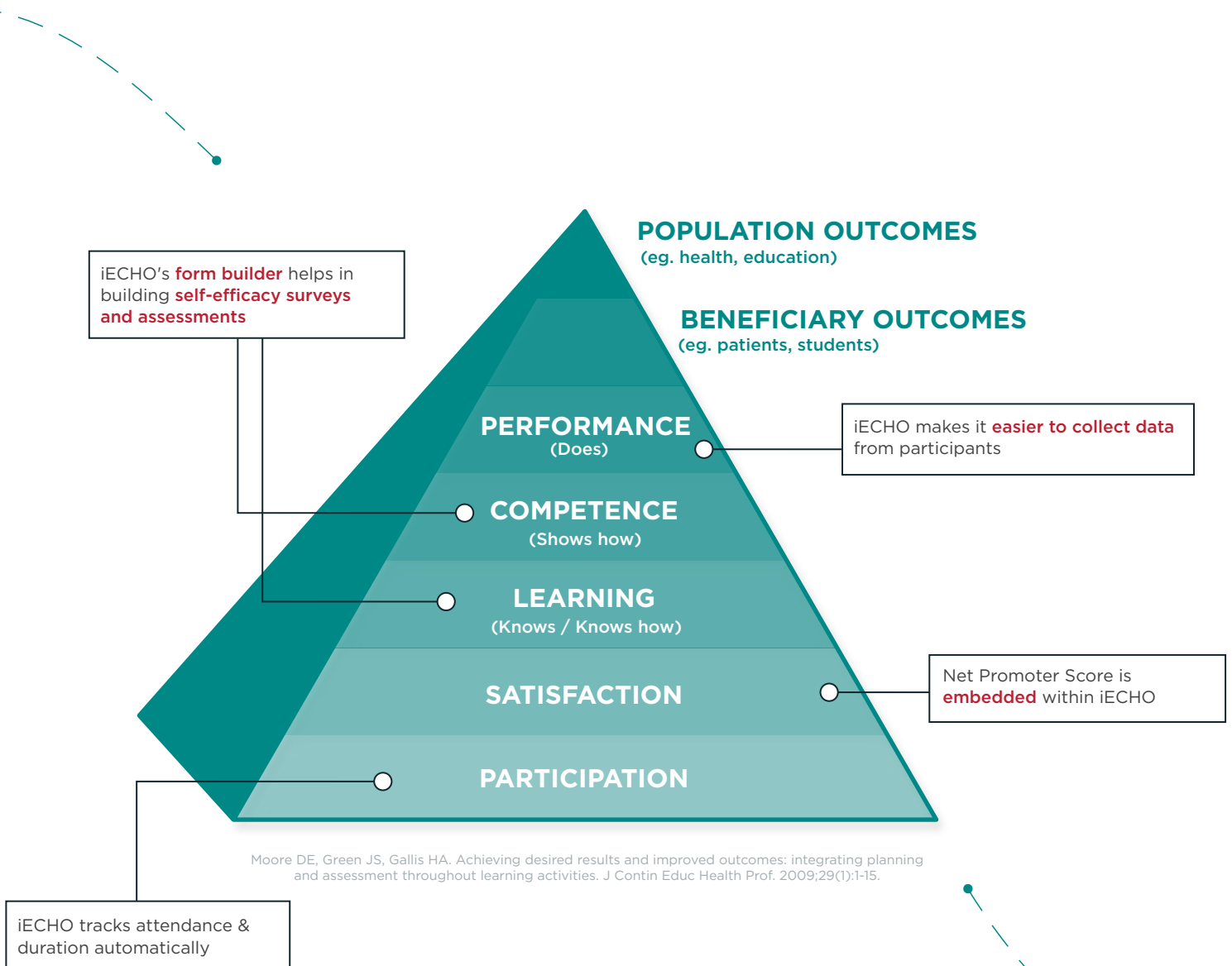
ଓଡ଼ିଆ
বাংলা
অসমীয়া

The platform is fully customizable to add more languages.



Tracking ECHO Outcomes

iECHO provides comprehensive Outcome Tracking, from participation to population impact - connecting learning at an individual level to system-wide impact.



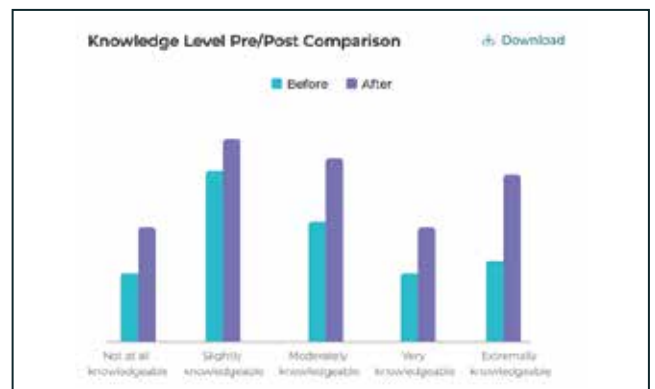
Sustainable Development Goals Tracking

iECHO also lets organizations track their program impact in relation to key UN Sustainable Development Goals. These SDGs are of strategic importance to Project ECHO & are integrated in iECHO's data systems.



Program Evaluation Tools

iECHO offers a complete suite of program evaluation tools such as built-in surveys, user-level data tracking, multilingual taxonomies, and automated geolocation tracking.



Future Vision

Harnessing large-scale network effects, amplified by advanced technologies such as AI, to accelerate knowledge sharing and drive systemic change globally.



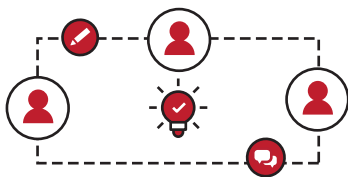
Peer-to-Peer Referrals

Participants can invite peers directly, helping programs grow organically through trusted networks.



Enhanced Search & Discovery

Leverages intelligent recommendations based on user role, interests, language, and activity for a personalized experience.



Asynchronous Collaboration

An asynchronous Q&A forum for members to seamlessly exchange ideas and drive collaborative problem-solving.



ECHO Learning Advisor

Delivers personalized learning paths tailored to each participant's context and goals within the ECHO network.



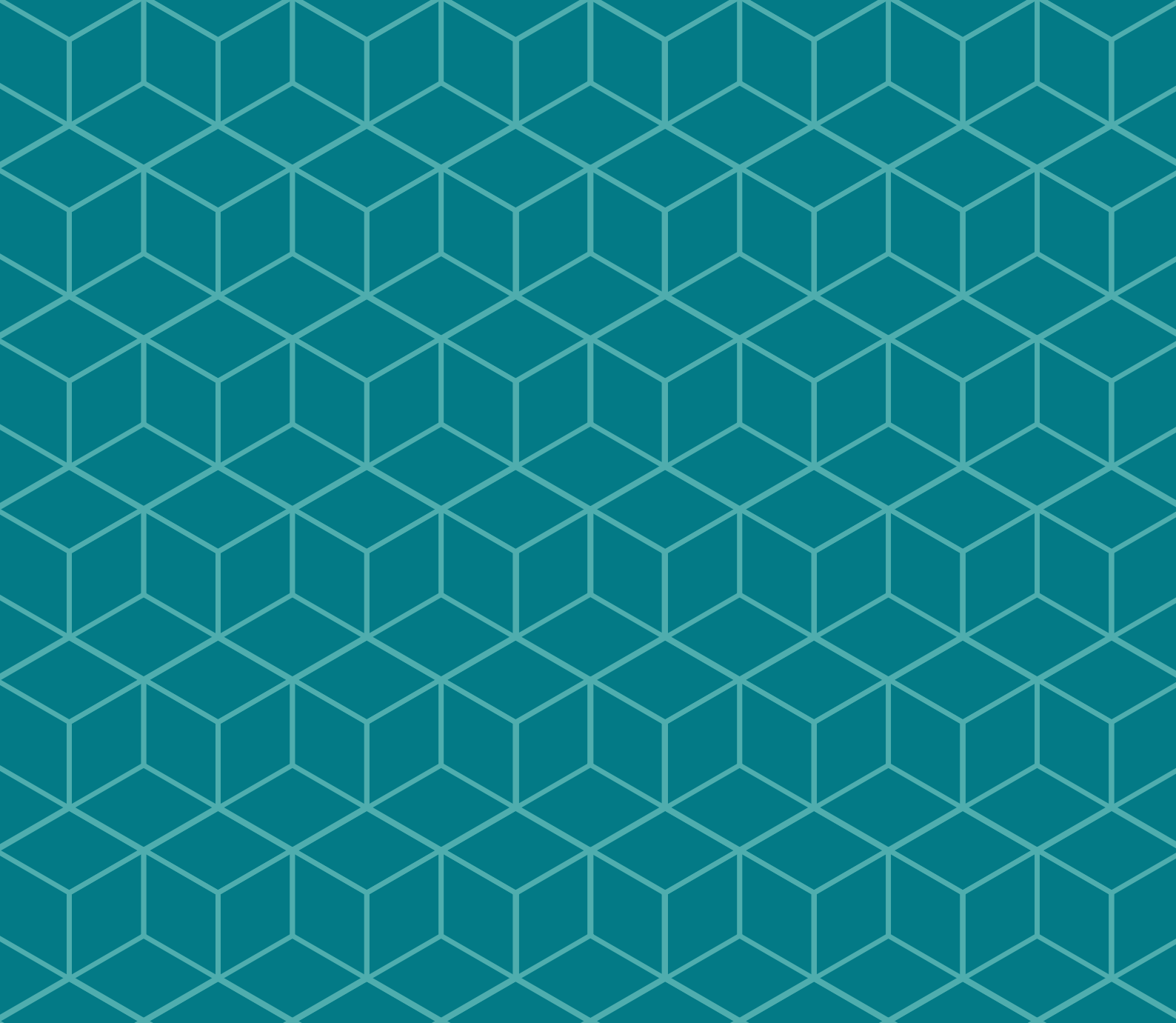
AI powered ECHO Session Assistant

AI assistant within live ECHO session that captures insights & generates session summaries.



ECHO Knowledge Engine

Enables discovery of trusted, community-validated insights across the ECHO network.



Project ECHO

1650 University Blvd, NE
Albuquerque,
NM 87131.

